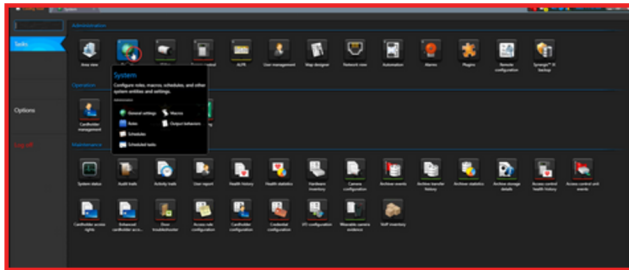


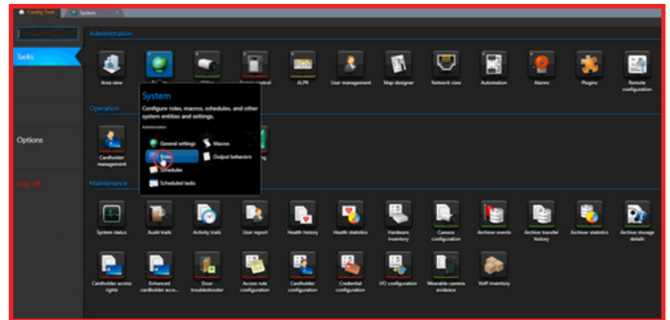
## Add Web-Based SEDK Role and Enable Port

Ensure that a web-based SDK role is added and the corresponding port is enabled.

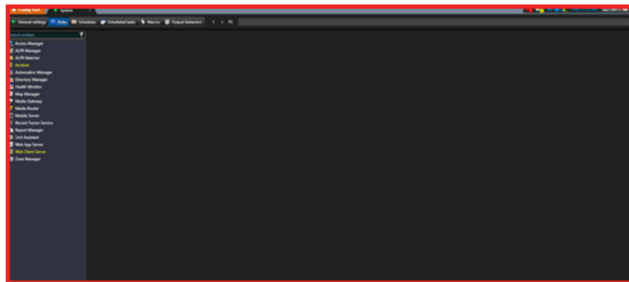
- 1 Open the Genetec CONFIG Tool. From the TASKS page, select SYSTEM.



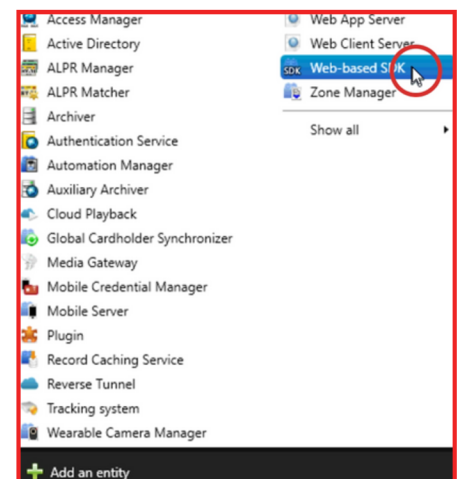
- 2 Click Roles



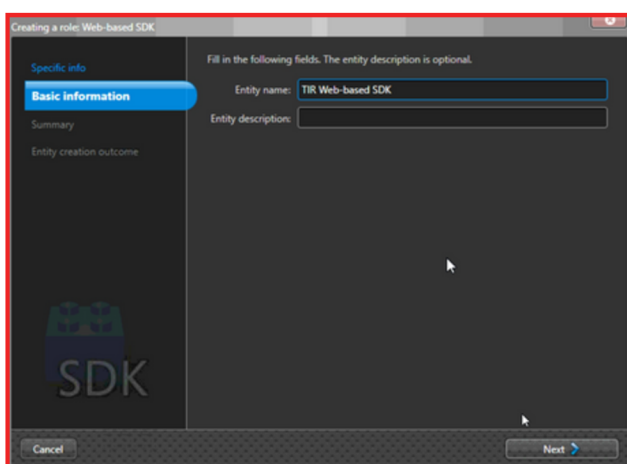
- 3 Add an Entity



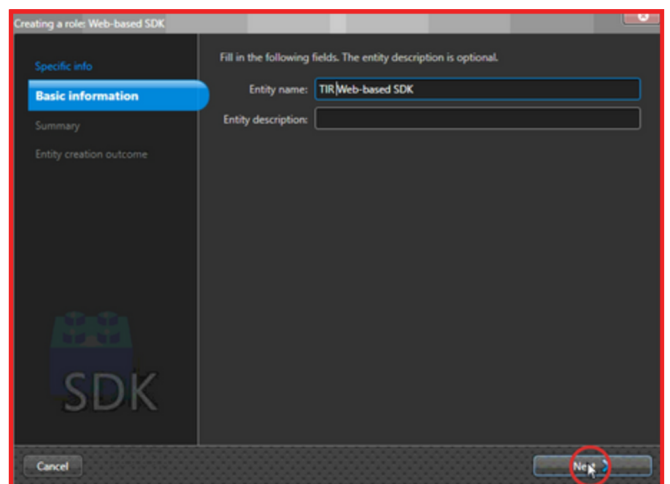
- 4 Select Web-based SDK



- 5 Rename the entity. The name you assign isn't critical—just choose something meaningful that will help you remember its purpose.

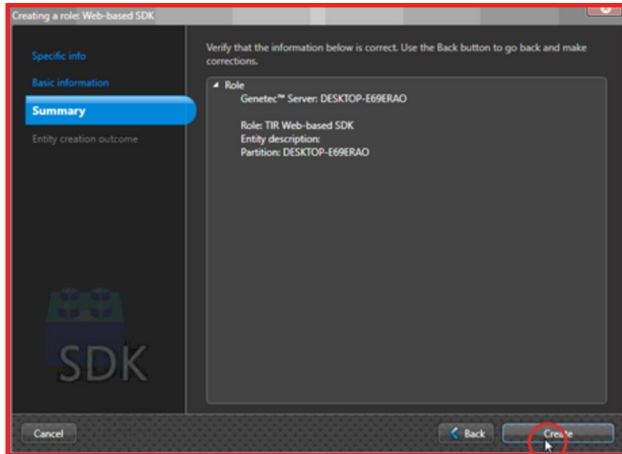


- 6 Click Next

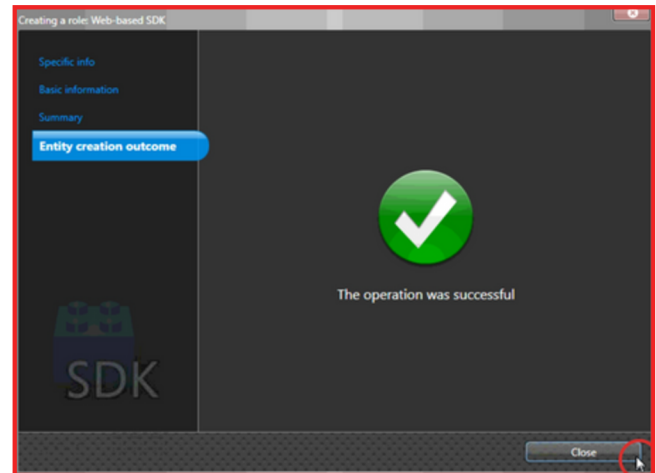


## Adding Web-Based SEDK Role and Enable Port Continued

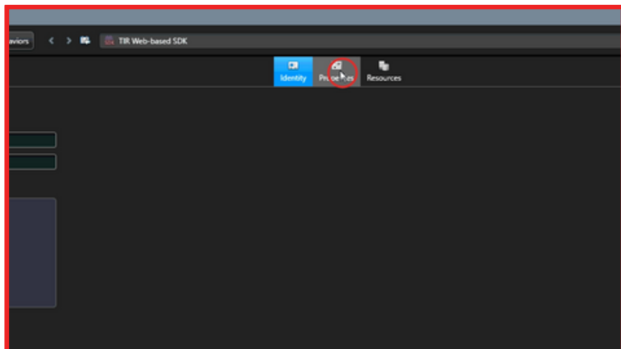
**7** Click Create



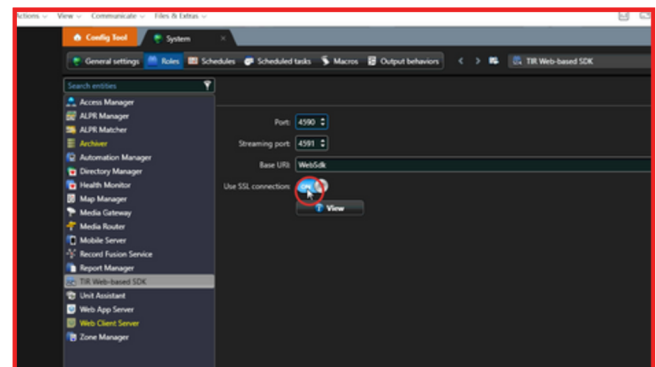
**8** Click Close



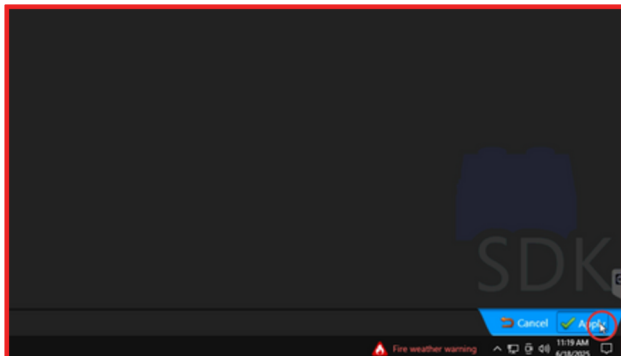
**9** Select the Web-based SDK from the tree on the left and navigate to the properties tab



**10** Disable SSL Connections



**11** Click Apply



## Adding Genetec to Thermal Radar:

Use the following to configure the Genetec Alert Receivers and Alert Rules in Thermal Radar's web interface.

- 1 Navigate to the Alert Receives tab. Select the Add button.

- 2 Using the Alert Format drop-down menu, select the Genetec VMS option.

- 3 Fill in the Name, Server Address, Server Port (use 4590 for Genetec), User Name, Password, and Server URI. Select Apply Changes.

- 4 Navigate to the Alert Rules page in the Thermal Radar web interface. Select Add. Configure the rule(s) for the alert (Detection Type, Station Number, Confidence, AOI ID, and Logical ID).

- 5 The Logical ID number shall match the Logical ID number in Genetec to trigger the alert signal.

- 6 Select Apply Changes.



**Alert Receivers**

Alert Format: Genetec

Name: Genetec

Server Address: 192.168.1.103

Server Port: 4590

User Name: admin

Password: TIR360

Server URI: WebSdk

**Genetec Settings**

Alert Format: Genetec

Name: Genetec

Server Address: 192.168.1.103

Server Port: 4590

User Name: admin

Password: TIR360

Server URI: WebSdk

**Alert Rules**

Alert Format: Genetec

Type	Stop	Conf	AOI	Data
Any	5	Any	Any	2
Any	Any	Any	Any	1

Rule Settings

Detection Type: Any

Station: 5

Confidence: Any

AOI ID: Any

Logical ID: 2

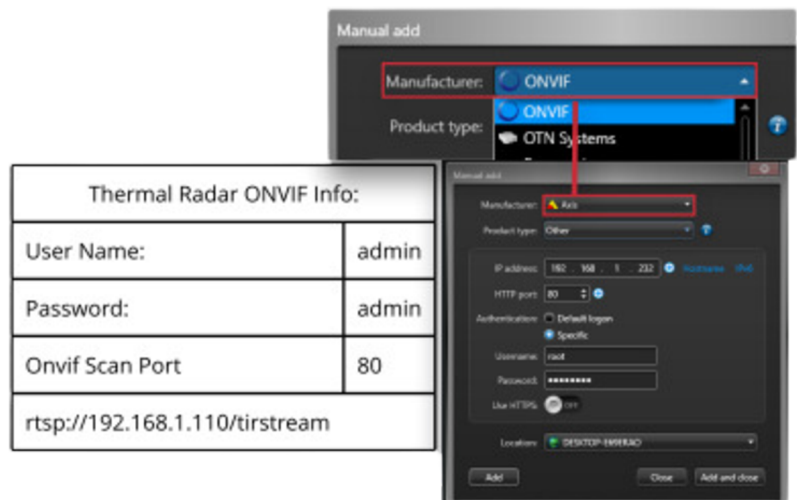
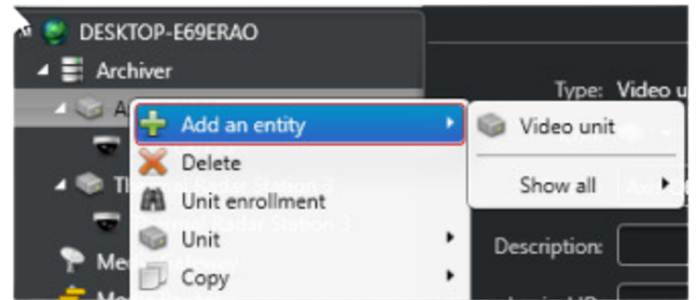
System Event

System Event	Active	Logical ID
TR Keep Alive Fail	<input type="checkbox"/>	1
TR Stream Stopped	<input type="checkbox"/>	1
TR Stream Restarted	<input type="checkbox"/>	1

Logical ID: 2

## Add Thermal Radar to Genetec

- 1** Using Genetec's Config Tool, add Thermal Radar as an Entity by selecting Video with the Tasks section.
- 2** Right-click on the desired Archiver (left pane) then left-click Add an Entity, then Video Unit.
- 3** Add Thermal Radar by selecting ONVIF as the manufacturer (stream type).
- 4** In the pop-up window for the Thermal Radar entry, enter the IP address, Port, Authentication, User Name, and Password for Thermal Radar.



## Add PTZ into Genetec

Add the PTZ to Genetec by repeating the previous steps. Use the PTZ manufacturer information to complete the required fields.

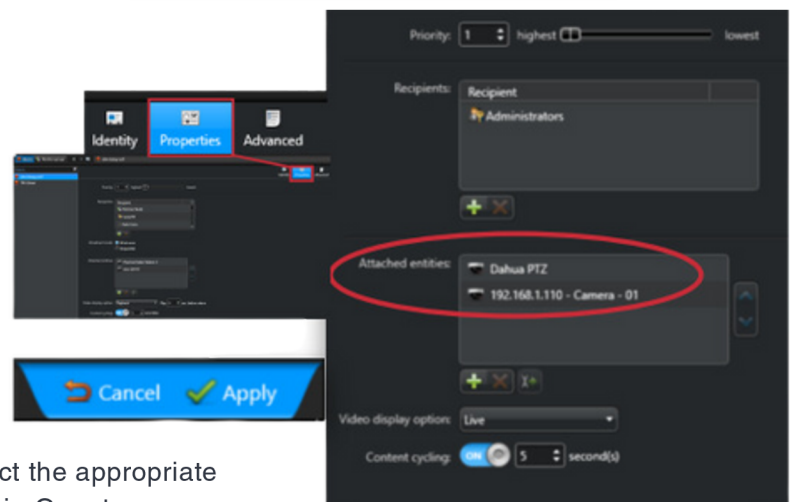
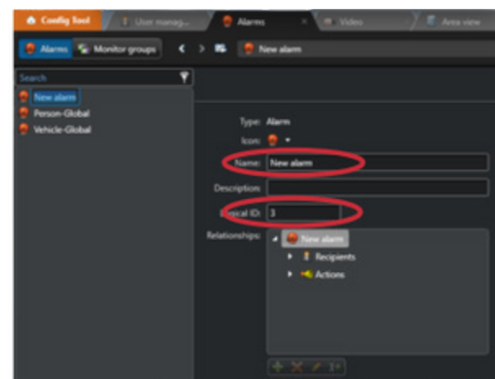
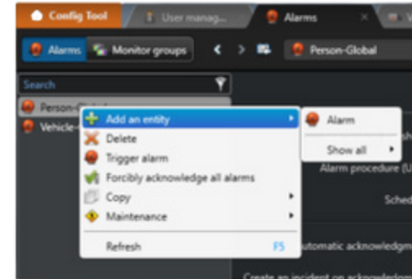
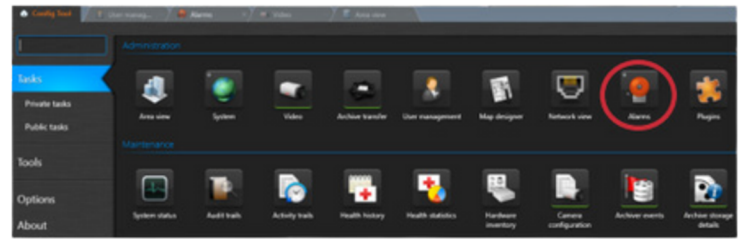
## Add Alerts into Genetec

- For Thermal Radar alarm activity to populate in Genetec, a special Genetec license is required. Obtain the GSC-1SDK-TIR-HYDRA license from Genetec and apply it to the VMS.
- Verification of the license import can be viewed within the About section in the Config Tool.
- After adding the special license to Genetec, utilize the following steps to configure Thermal Radar alarms.

GSC-1SDK-Axis-PerimeterDefend	One (1) Genetec SDK connection for Axis with Perimeter Defender
GSC-PM-GAP-RSA	Restricted Security Area Surveillance Advanced Package. Enable surveillance with ma
GSC-1SDK-TIR-HYDRA	One (1) Genetec SDK connection for Thermal Imaging Radar with Hydra
GSC-0m-E-1C	1 camera connection

## Add Alerts into Genetec Continued

- 1** Select the Alarm Module from the Tasks Tab.
- 2** Right-click in the tree on the left and add an alarm as a new Entity.
- 3** Assign a Name and Logical ID to the newly-created alarm. Note: Adding a Description is suggested, but not required.
- 4** The Logical ID assigned to the alarm needs to match the Logical ID under the Alert Rules page in the Thermal Radar web interface.
- 5** Configure the Properties of the alarm. Assign Users or User Groups to the alarm. Assign the Thermal Radar's stream and PTZ to the alarm.
- 6** Configure the rule settings as necessary and select the appropriate Logical ID in relation to the alert signal generated in Genetec.



## Test Alerts/Alarms

For a physical alarm verification, conduct a walk test within a Thermal Radar AOI. For a virtual verification, navigate to the Alert Rules page on the Thermal radar web interface, highlight the rule to verify, then select the Test button.

## Special Considerations

- Supported web browsers: Chrome, Firefox, and Edge
- The creation of a firewall rule may be required to allow alerts from Thermal Radar to the Genetec server.